

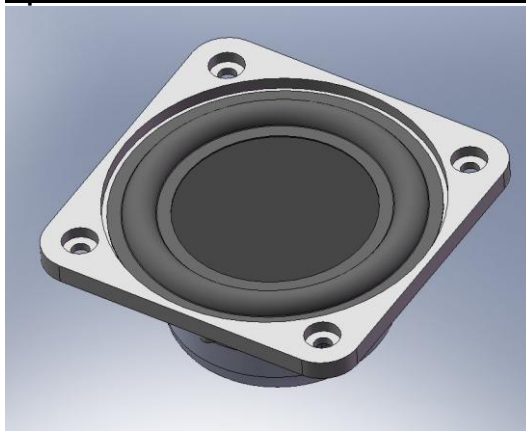


Cotswold Sound Systems

The Coach House, Burmington, Shipston-on-Stour, CV36 5AR, UK
 tel: +44 (0) 7720 555 762
 email: j.vizor@btinternet.com

Specification Sheet

BMR46 N4Y – 2½ inch – 4ohm



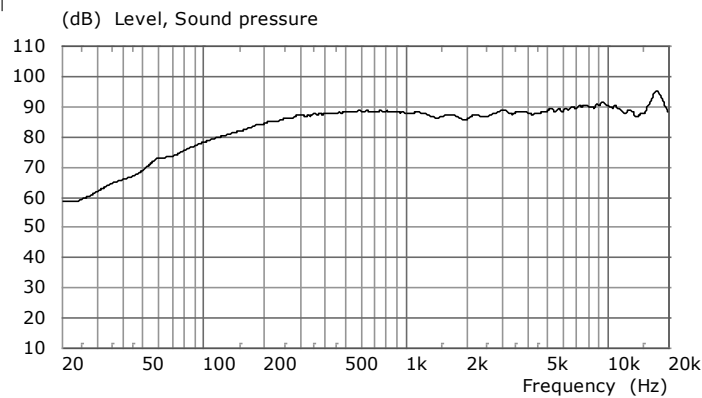
T/S parameter	value	unit
Re	4.36	ohm
Le	0.035	mH
Re2	2.75	ohm
Le2	0.13	mH
Bl	4.55	Tm
Mms	2.27	gm
Cms	0.593	mm/N
Vas	0.251	litre
Rms	0.346	Ns/m
fs	137	Hz
Qms	5.66	
Qes	0.41	
Qts	0.384	
Sd	16.62	cm ²
Max. excursion (pk-pk)	4.2	mm
Continuous Power Handling, IEC268-5 (250Hz hi-pass)	25	W

Features

- **Balanced Mode Radiator (BMR), Internationally Patented Technology**
- **Black finish, with chassis moulded in Engineering Grade plastic**
- **High temperature magnets, with full magnetic shielding**
- **Overall dimensions: 68 mm x 68 mm x 31mm deep**
- **Weight: 190 gm**
- **Available with varying grades of Neodymium**

Frequency Response (on-axis):

2.83volts/1m



Sound Power Response:

(calculated)

