



Cotswold Sound Systems

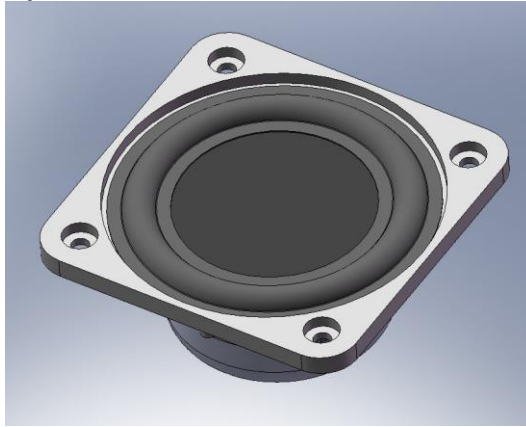
3 Brooks Orchard, Shrewton, Salisbury, SP3 4JG, UK

tel: +44 (0) 7557 922 871

email: j.vizor@btinternet.com

Specification Sheet

BMR46XE N4R – 2½ inch – 4ohm



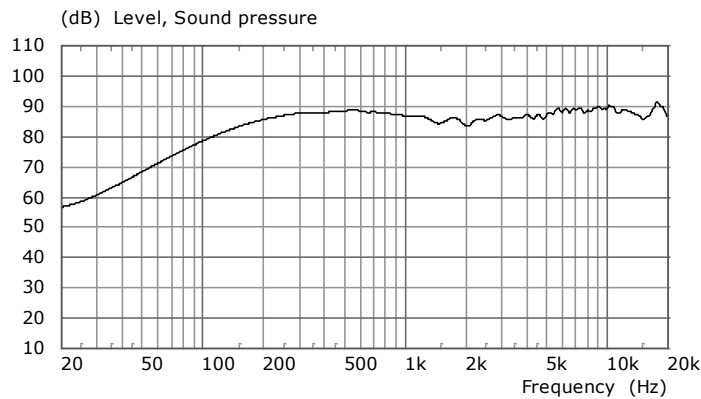
T/S parameter	value	unit
Re	3.730	ohm
Le	0.045	mH
Re2	2.394	ohm
Le2	0.198	mH
BL	3.779	Tm
Mms	1.842	gm
Cms	0.496	mm/N
Vas	0.243	litre
Rms	0.194	Ns/m
fs	166.6	Hz
Qms	9.953	
Qes	0.504	
Qts	0.479	
Sd	18.67	cm ²
Max. Excursion (pk-pk)	9.6	mm
Power handling (IEC268-5)	TBA	W

Features

- **Balanced Mode Radiator (BMR), Internationally Patented Technology**
- **Black finish, with chassis moulded in Engineering Grade plastic**
- **High temperature magnets, with full magnetic shielding**
- **Overall dimensions: 68 mm x 68 mm x 35mm deep**
- **Weight: 194 gm**
- **Available with varying grades of Neodymium**

Frequency Response (on-axis):

2.83volts/1m



Sound Power Response:

(calculated)

