



# Cotswold Sound Systems

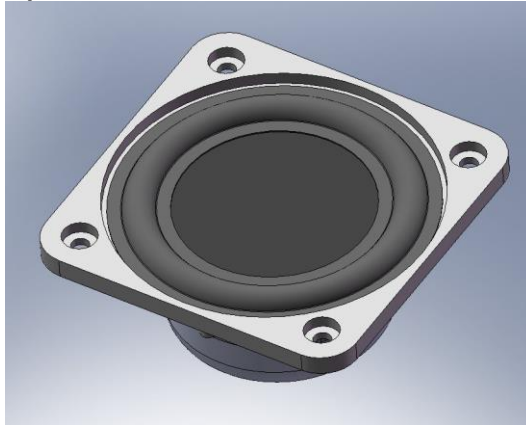
3 Brooks Orchard, Shrewton, Salisbury, SP3 4JG, UK

tel: +44 (0) 7557 922 871

email: j.vizor@btinternet.com

## Specification Sheet

## BMR46XEL N4R – 2½ inch – 4ohm



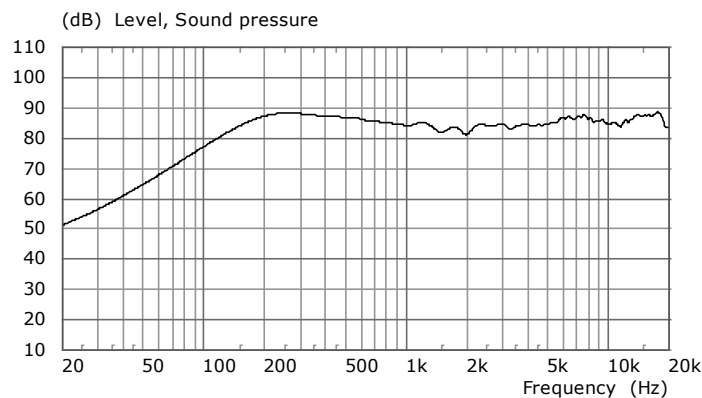
T/S parameter	value	unit
Re	3.780	ohm
Le	0.041	mH
Re2	2.312	ohm
Le2	0.162	mH
Bl	2.792	Tm
Mms	1.840	gm
Cms	0.361	mm/N
Vas	0.177	litre
Rms	0.200	Ns/m
fs	195.3	Hz
Qms	11.277	
Qes	1.095	
Qts	0.998	
Sd	18.67	cm <sup>2</sup>
Max. excursion (pk-pk)	9.6	mm
Continuous Power Handling, IEC268-5 (250Hz hi-pass)	TBA	W

## Features

- **Balanced Mode Radiator (BMR), Internationally Patented Technology**
- **Black finish, with chassis moulded in Engineering Grade plastic**
- **High temperature magnets**
- **Overall dimensions: 68 mm x 68 mm x 34mm deep**
- **Weight: 172 gm**
- **Available with varying grades of Neodymium**

## Frequency Response (on-axis):

2.83volts/1m



## Sound Power Response:

(calculated)

